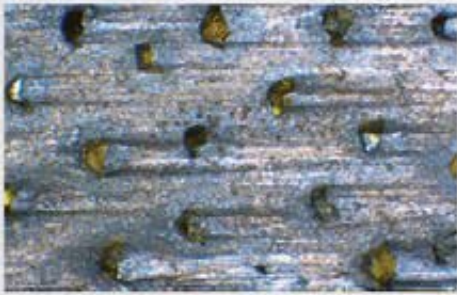


# DIAMOND TOOLS FOR DRILLING

With more than 70 years of experience, Husqvarna continues to develop state-of-the-art diamond drill bits for professionals and frequent users. Our drill bit range consists of four series. Elite-Drill series are drill bits with Diagrip™, the revolutionary technology that yields superior cutting capacity, longer life and a smooth, rapid cut. Vari-Drill series are laser-welded, high performance tools, which provides durability and a free cutting performance. D 600 series is designed for drilling in tiles. Tacti-Drill series are reliable, laser-welded bits with a high purchasing value for non-intensive use in heavier applications.

## Revolutionary diamond tool technology for superior cutting capacity and durability.

One of the greatest benefits with the Diagrip™ technology is how fast and smooth the diamond tools go through all types of construction materials. Diagrip™ tools means trouble-free drilling, especially in heavily reinforced concrete.



The diamonds are specially treated to remain in place in the segments longer, and be distributed optimally, delivering maximum efficiency to every diamond. With Diagrip™ the diamonds are exposed and expended at an even rate, which makes the edge very even and powerful, even when cutting hard materials like reinforced concrete.



See pages 14–15 for more information.



ELITE-DRILL

VARI-DRILL

PRODUCT	ELITE-DRILL				VARI-DRILL	
	D 1405	D 1410	D 1420	D1425 - NEW	D 20	D 65
SEGMENT SHAPE						
MATERIAL						
Tiles	—	—	—	—	—	—
Natural stone, granite	●●●	●●	●	—	●●●	—
Concrete, hard	●●●	●●●	●●	—	●●●	—
Concrete, medium	●●	●●	●●●	●●●	●●	●●
Concrete, soft	—	—	●●	●●●	●	●●
Concrete, abrasive	—	—	—	●●	—	●●●
Asphalt	—	—	—	—	—	●●
Brick	—	—	—	—	—	●●
Cement blocks	—	—	—	—	—	●●
RECOMMENDED EQUIPMENT						
Drill motor	DM 650, DM 406 H, DM 340, DM 280, DMS 240					

●●● = Optimal ●● = Good ● = Acceptable — = Not recommended



Ташев-Галвинг ООД  
[www.tashev-galving.com](http://www.tashev-galving.com)



TACTI-DRILL

D 20	D 1210	D 810	D 05	D 25	D 35
-	-	-	•••	-	-
•••	•••	•••	•••	•	•
•••	•••	•••	•	•••	•••
•••	•••	•••	•	•••	•••
•••	•••	•••	•	•	-
•••	•••	•••	•	•••	•••
•••	•••	•••	•	•••	•••

DM 280, DM 230, DM 220,  
 DMS 240, DMS 160 AT/A

DM 230, DM 220, DMS 160 AT/A

### Husqvarna Elite-Drill D 1405.

Gold level drill bit with Diagrip™ technology for easy drilling in hard concrete.  
For motors from 2.4 kW and up. 500 mm core length as standard.

DIAMETER, MM	SEGMENT DIMENSIONS, MM (L×W×H)	NUMBER OF SEGMENTS	PRODUCT NUMBER CONNECTOR 1 1/4"	PRODUCT NUMBER CONNECTOR CR 128
52	24.0×3.5×9.0+2	5	582 06 29-03	582 06 29-02
62	24.0×3.5×9.0+2	6	582 06 30-03	582 06 30-02
72	24.0×3.5×9.0+2	6	582 06 31-03	582 06 31-02
82	24.0×3.5×9.0+2	7	582 18 62-03	582 18 62-02
92	24.0×3.5×9.0+2	7	582 49 89-03	582 49 89-01
102	24.0×3.5×9.0+2	8	582 18 93-03	582 18 93-02
107	24.0×3.5×9.0+2	9	582 18 94-03	582 18 94-02
112	24.0×3.5×9.0+2	9	582 18 95-03	582 18 95-02
122	24.0×3.5×9.0+2	10	582 18 96-03	582 18 96-02
127	24.0×3.5×9.0+2	10	582 18 97-03	582 18 97-02
132	24.0×3.5×9.0+2	11	582 06 32-03	582 06 32-02
142	24.0×3.5×9.0+2	11	582 18 98-03	582 18 98-02
152	24.0×4.0×9.0+2	12	582 19 51-03	582 19 51-02
162	24.0×4.0×9.0+2	12	582 19 52-03	582 19 52-02
172	24.0×4.0×9.0+2	13	582 19 53-03	582 19 53-02
182	24.0×4.0×9.0+2	13	582 19 54-03	582 19 54-02
200	24.0×4.0×9.0+2	14	582 19 55-03	582 19 55-02
225	24.0×4.0×9.0+2	15	582 19 56-03	582 19 56-02
250	24.0×4.5×9.0+2	16	582 19 57-03	582 19 57-02
300	24.0×4.5×9.0+2	18	582 19 58-03	582 19 58-02
350	24.0×4.5×9.0+2	21	582 19 59-03	582 19 59-02

Other diameters available on request.

### Husqvarna Elite-Drill D 1410.

Gold level drill bit with Diagrip™ technology for easy drilling at high speeds.  
For motors from 2.4 kW and up. 500 mm core length as standard.

DIAMETER, MM	SEGMENT DIMENSIONS, MM (L×W×H)	NUMBER OF SEGMENTS	PRODUCT NUMBER CONNECTOR 1 1/4"	PRODUCT NUMBER CONNECTOR CR 128
82	24.0×4.0×9.0+4	8	585 20 98-02	585 20 98-03
92	24.0×4.0×9.0+4	9	585 21 01-02	585 21 01-03
102	24.0×4.0×9.0+4	9	585 21 02-02	585 21 02-03
107	24.0×4.0×9.0+4	10	585 21 04-02	585 21 04-03
112	24.0×4.0×9.0+4	10	585 21 05-02	585 21 05-03
122	24.0×4.0×9.0+4	11	585 21 06-02	585 21 06-03
127	24.0×4.0×9.0+4	12	585 21 08-02	585 21 08-03
132	24.0×4.0×9.0+4	12	585 21 10-02	585 21 10-03
142	24.0×4.0×9.0+4	12	585 21 12-02	585 21 12-03
152	24.0×4.5×9.0+4	13	585 21 13-02	585 21 13-03
162	24.0×4.5×9.0+4	13	585 21 14-02	585 21 14-03
172	24.0×4.5×9.0+4	14	585 21 16-02	585 21 16-03
182	24.0×4.5×9.0+4	14	585 21 18-02	585 21 18-03
192	24.0×4.5×9.0+4	15	585 21 20-02	585 21 20-03
200	24.0×4.5×9.0+4	15	585 21 21-02	585 21 21-03
225	24.0×4.5×9.0+4	16	585 21 24-02	585 21 24-03
250	24.0×4.5×9.0+4	17	585 21 28-02	585 21 28-03
275	24.0×4.5×9.0+4	19	585 27 88-02	585 27 88-03
300	24.0×4.5×9.0+4	19	585 21 32-02	585 21 32-03
350	24.0×4.5×9.0+4	22	585 21 34-02	585 21 34-03

Other diameters available on request.